



HARMONY®
Design your smile

THE INVISIBLE SOLUTION
FOR A PERFECT SMILE



THE WORLD'S FIRST DIGITALLY CUSTOMIZED SELF LIGATING LINGUAL SYSTEM

HARMONY is the only lingual system that combines:

- **Interactive Self Ligating Brackets**
- **Customized Bonding Pads**
- **Anterior Positioning Jigs**
- **Robotically Formed Arch Wires**
- **Digitally-Assisted Treatment**



SIMPLICITY:
Easily opens with a probe
and closes with a finger

DURABILITY:
Clip protection for improved
reliability. Bracket engineered
to function seamlessly with clip

LOW PROFILE TIE WINGS:
Gingival tie wings are designed
for comfort and offer more
flexibility with elastomerics
and other attachments

PATIENT COMFORT:
Designed for comfort with
rounded edges and minimal
intra-oral contact for a noticeably
smoother feel in the mouth

PERFORMANCE:
Bevels and anti-friction zones for
better sliding mechanics

HIGH-PRECISION SLOT:
Proprietary manufacturing methods create a slot that offers
true control in all three dimensions to exacting tolerances

PREDICTABLE RESULTS:
Bracket base engineered to fit precisely with customized bonding pad
for torque, angulation, in/out and rotation control during treatment

“As an orthodontist, I felt that the HARMONY System should adapt to the treatment philosophy of every clinician, providing doctors with the ability to design each case to meet their individual treatment goals. After successfully treating more than 1,000 cases with the HARMONY System, doctors have discovered just how easy lingual orthodontics can be when using advanced CAD/CAM and precision wire bending technologies.”

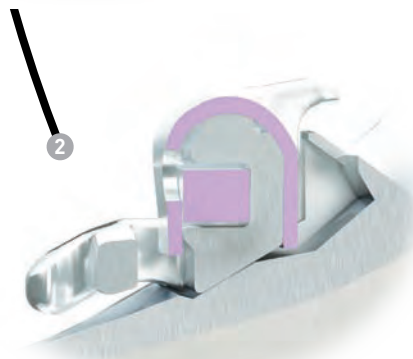
Patrick C. Curiel, DDS, MA
Founder of the Harmony Lingual System



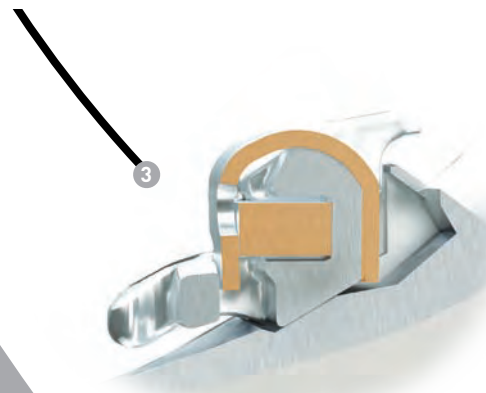
INTERACTIVE SELF LIGATING BRACKETS



INITIAL PHASE:
Passive clip for minimal friction
during leveling and aligning

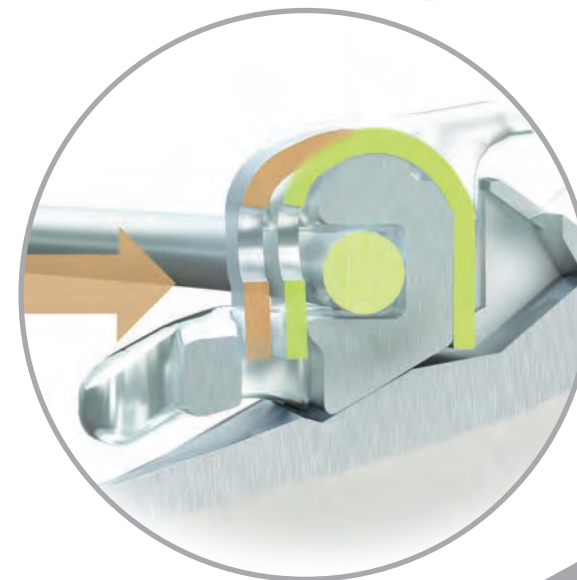


MIDDLE PHASE:
Interactive clip for space closure
and intra-arch mechanics



FINAL PHASE:
Fully active clip for finishing with optimal
control in all three dimensions

HARMONY is a digitally customized self ligating lingual system that offers exceptional control in all three dimensions from the initial passive phase with small round wires to the finishing phase when tolerances between large rectangular wires and the actively-ligated slot are critical.



DURING TREATMENT:
The interactive clip gently and comfortably guides the tooth to its ideal position

TIME SAVING BENEFITS OF THE HARMONY SYSTEM

REDUCED CHAIR TIME

Changing arch wires with HARMONY brackets can shorten appointments by 75% over traditionally ligated lingual appliances.

FEWER APPOINTMENTS

Self ligating brackets allow for 8 – 12 week intervals between appointments, dramatically reducing the number of visits over traditionally ligated systems.

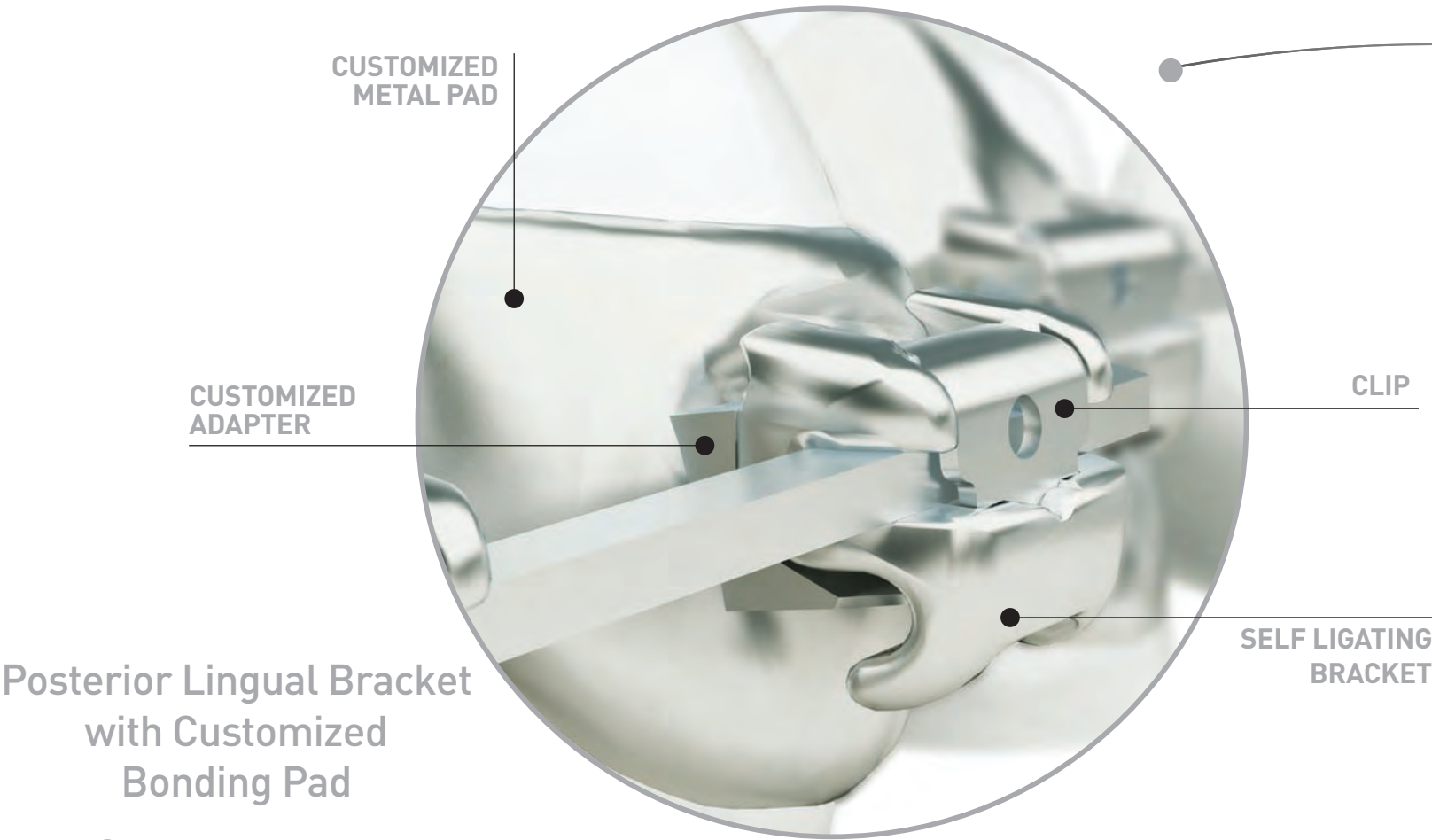
SHORTER TREATMENT TIME

The combination of precision manufactured self ligating brackets and robotically formed arch wires leads to predictable outcomes in a short period of time.

“The Invisible Solution”

CUSTOMIZED BONDING PADS

Using proprietary digital scanning and CAD/CAM technologies, a highly accurate bonding pad is created for the lingual surface of each tooth. The customized pad integrates seamlessly with its corresponding interactive self ligating bracket. The slot of each bracket is positioned ideally on each tooth using a digitally customized adapter that works in conjunction with robotically formed arch wires to deliver doctor-driven, patient-specific treatment goals.



Posterior Lingual Bracket with Customized Bonding Pad

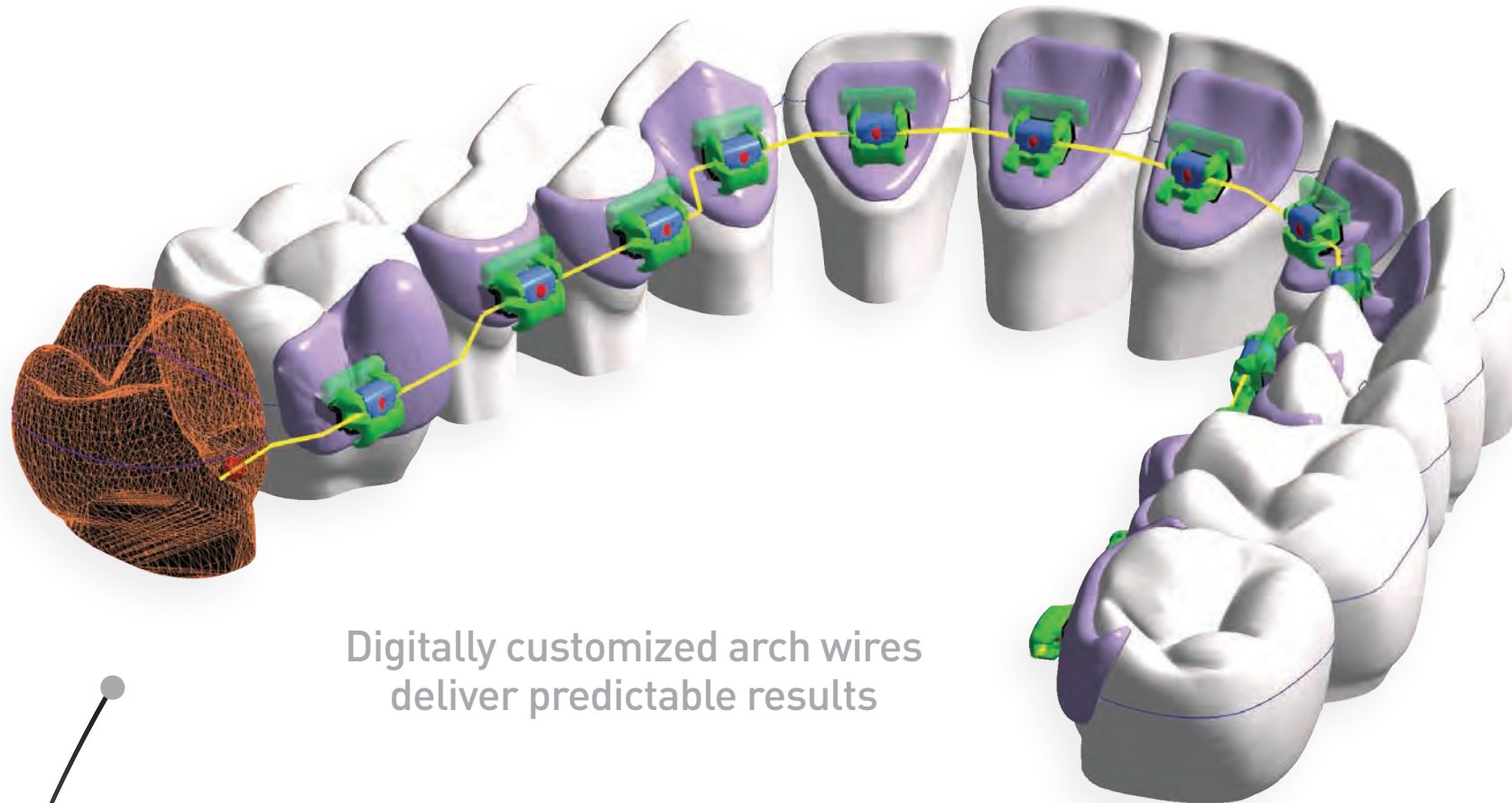
BONDING ACCURACY

Anterior positioning jigs are provided with every **HARMONY** case, which provides a mechanical guide for bonding anterior teeth that are unable to be bonded at the beginning of treatment or require rebonding during treatment.



ROBOTICALLY FORMED ARCH WIRES

HARMONY is the only lingual system that delivers predictable outcomes and efficient treatment mechanics using digitally customized self ligating brackets and arch wires. Using proprietary technology and information provided by the orthodontist, a fully customized, robotically formed series of arch wires are produced to fit the treatment goals of each patient as pre-determined by the doctor.

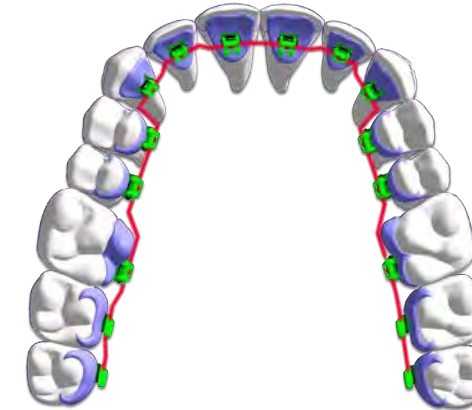


Digitally customized arch wires deliver predictable results

TYPES OF HARMONY ARCH WIRE

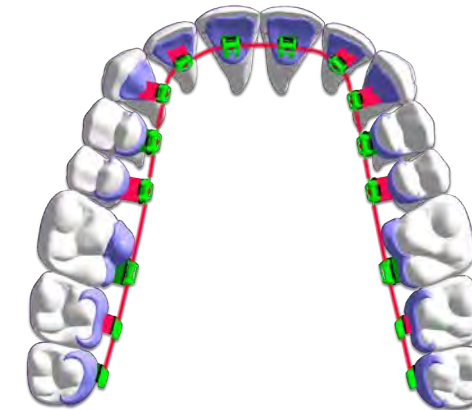
- Nickel Titanium
- Stainless Steel
- Beta Titanium

HARMONY offers three options for customizing the arch wires and the in/out dimensions of the appliances.



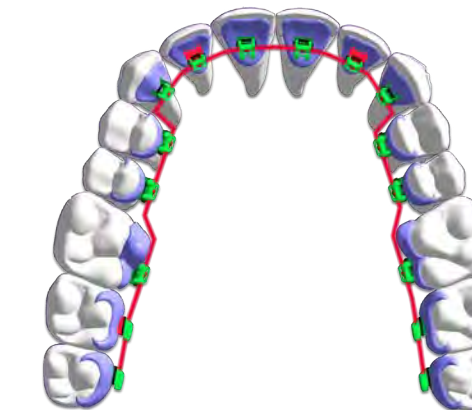
Compensation in the Wire

Arch wires are adapted as close to the tooth as possible. A small in/out dimension on every tooth adds more bends to the wire, but maximizes patient comfort.



Compensation in the Appliance

In/out dimensions are increased on some teeth to form an arch wire with minimal bends, which improves sliding mechanics when space management is critical such as extraction cases.



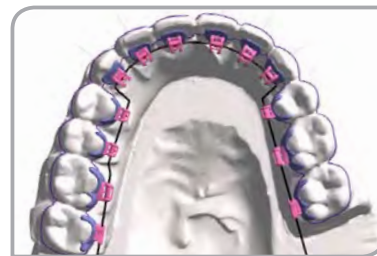
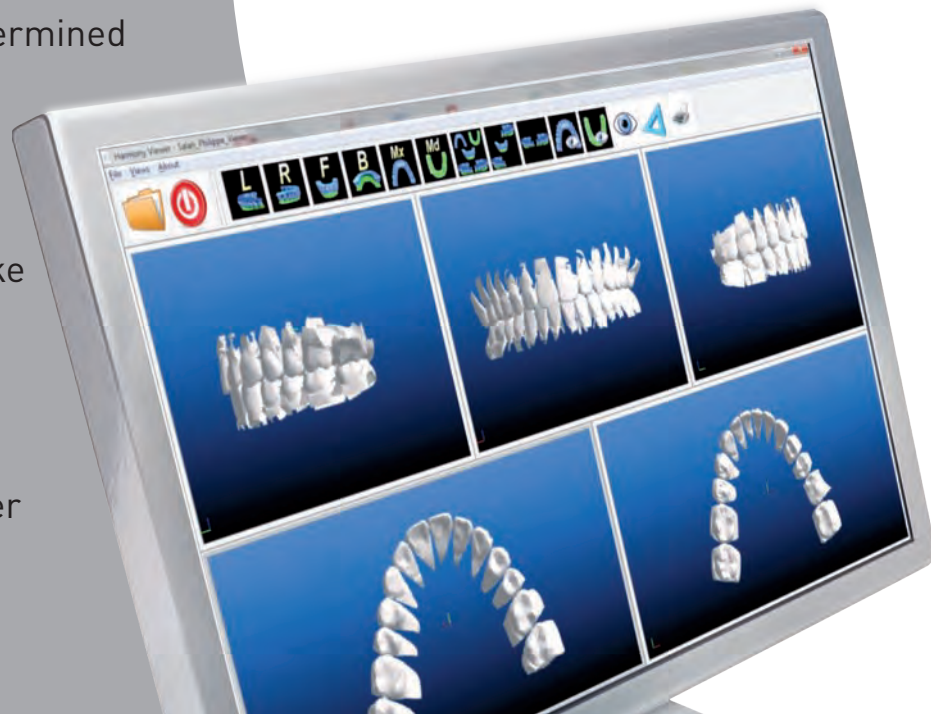
HARMONY Optimized

Arch wires are formed with most of the compensation in the wire, providing the optimal balance between patient comfort and sliding mechanics.

HARMONY TECHNICAL CENTER

Skilled technicians at the Harmony Technical Center work closely with orthodontists to design a perfectly customized smile for every patient.

- Doctors view each case using HARMONY's online clinical check feature, which provides a digital view of the finished case prior to fabrication of brackets and arch wires
- The digital set-up for every HARMONY case is determined by the orthodontist's treatment philosophy
- Indirect bonding trays and positioning jigs take the guesswork out of lingual bonding
- Each case is custom manufactured to deliver predictable results



Digital set-up



Before treatment



Initial bonding



Fourth appointment
6 months in treatment



Finished case
9 months / 6 appointments



.014 NiTi
Upper/Lower



.018 x .025 NiTi
Upper/Lower



BEFORE TREATMENT



AFTER TREATMENT



www.myHARMONYsmile.com



SHEBOYGAN, WISCONSIN | U.S.A. AND CANADA: 1.800.558.7687 | OUTSIDE U.S.A: 1.920.457.5051
WWW.AMERICANORTHO.COM | MYHARMONY@AMERICANORTHO.COM

LITSL-40 REV01